

The World's Most Advanced Personal Motion Simulator

Designed and Made in the UK



The Atomic A2 re-writes the rulebook for personal motion simulation. JoyRide's patented ForceAssist™ technology delivers up to a staggering **10X more force and acceleration** than systems of similar technical specification, resulting in a blistering speed of up to **71 degrees per second**, extremely high torque (up to **64Nm**) across its full **27 degree dual-axis movement range**, and the industry's lowest power requirements of just **150w** - all without detracting from any of the feeling you'd expect from a full size motion simulator.

Superior Ride Performance

The high speed and large movement range ensures a truly realistic ride. JoyRide's **ultra-low latency RealFeel™ motion system** faithfully imparts the organic feeling of sailing or flying, or highly dynamic and aggressive movement for track racing or rallying. To complete the experience, the **powerful dual tactile transducer system** (optional) with integrated digital amplifier allows you to feel *everything*, right down to the roar of your engine...

Huge Movement Range

Powerful Force & Acceleration

Exceptional Motion Detail



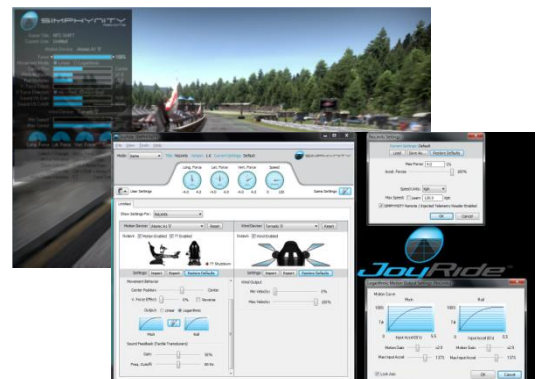
Ultra-Compact & Robust

With a total weight of under **50kg** and a floor area of just **145 x 63 cm**, the Atomic A2 can be stowed and relocated with ease by a single person in a matter of minutes, making it suitable for everyday home use, corporate events, arcades, race centres and pit-side professional training. **Easily transportable** in the boot of an average-size vehicle, and **collapsible** when not in use.

Un-rivalled Games Support

With **far more major titles supported** than any other existing system, JoyRide's SIMPHYNNITY™ software enables accurate motion physics data to be extracted from an almost limitless array of games without the need for a special interface. Extensive features to tweak the ride to your liking before storing your settings on a per-user, per-game basis. JoyRide's ethos is to continually support major new titles as they become available, so you can expect the best possible variety the industry has to offer.

See <http://joyridesimulators.com/games> for the latest listing.



Adjustability

- Independent height, tilt and reach adjustability for steering shelf, shifter mount and foot rest provides optimum comfort for a large range of riders. Single action tool-less adjustment allows for a faster and smoother change over for drivers (controller mounts optional)
- Reversible shifter mount for left or right hand drive layouts
- Generously sized control tables with dedicated mounting holes for a number of popular controllers including Logitech and Saitek
- Platform-based seat reclination mechanism and industry standard seat mounting points ensures compatibility with a variety of popular fixed-back racing seats (please contact JoyRide for more information)

Connectivity

- Connect an almost limitless number of devices via standard 3.5mm jack leads to operate in unison with JoyRide's unique RideNet™ passenger system. Individual motion profile settings can be specified for each seat if required
- Quick and easy device identification and setup system eliminates headaches with large-scale installations
- Open protocol and SDK for use by software developers

Safety Features

- Gaitered conduits prevent finger trapping and dust entering housing
- Motion defeat switches in housing halt actuators in the event of contact with a foreign body
- Low voltage electronics prevent the risk of electric shock
- Optional 3 point safety harness with custom-embroidered seatbelt pads

Technical Specifications

Base area	68 x 63 cm (27 x 25 inches)
Base area, with foot rest	145 x 63 cm (58 x 25 inches)
Height (inc. Seat)	122 cm (48 inches)
No. actuators	2
Tactile Transducers	2 (w/ 60w RMS integrated amp)
Maximum velocity	71.2 degrees/second
Maximum torque	64.4 Nm
Maximum pitch & roll	27 degrees
Min. rider height (approx)	135cm (4' 5")
Max. rider height (approx)	200 cm (6' 7")
Max. rider weight (approx)	135 kg (300 lbs)
Approx shipping weight	50 kg (110 lbs)
Approx power consumption	150w

Don't settle for a compact motion seat that barely vibrates, blow the socks off your riders with the full-motion Atomic A2!



Plug in to living room television



Full immersion in home cinema



Multi-rider event